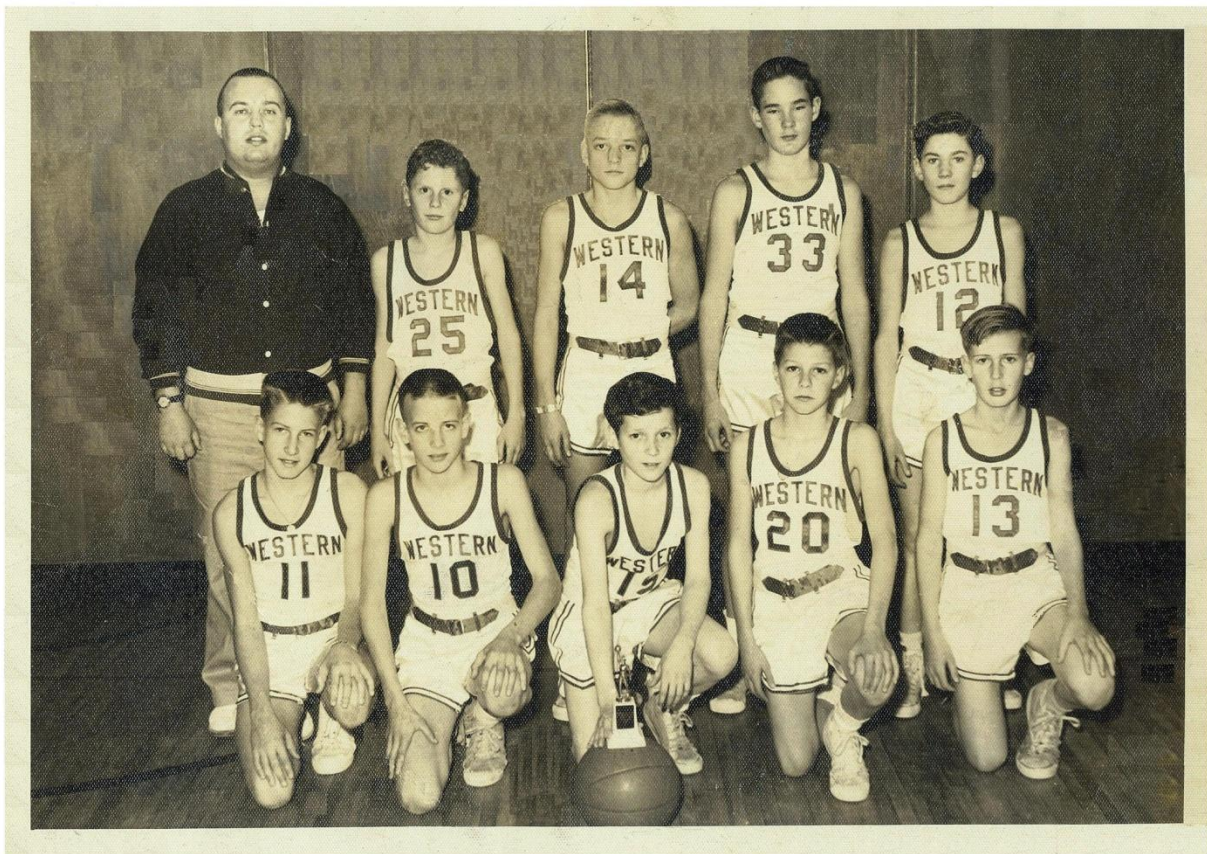




CLASS OF '63 TATTLER EXTRA

Volume 6

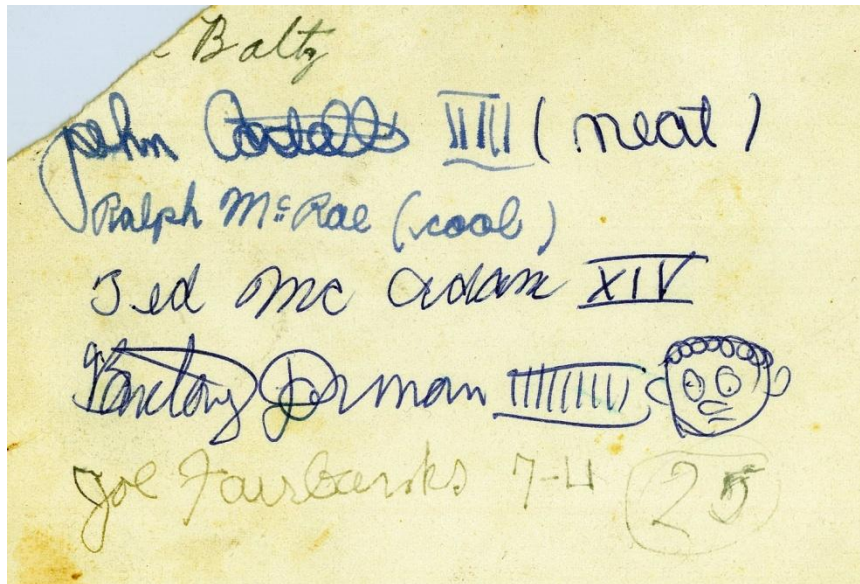
Spring 2010



WESTERN JR. HIGH BASKETBALL TEAM 8TH GRADE

BACK ROW: the coach, Joe Fairbanks (my next door neighbor) Teddy McAdams, Frampton Ellis, Bryant Agnew.

FRONT ROW: Jack Costello, Barclay Dorman, Joe Triplett, Ralph McRae, and Tommy Walsh.



“Billy Baltz called himself the team manager - don't know it official. He died at 16 in a car crash. Mike Geary was on the team (I am pretty sure). At least he practiced with them - they practiced at Fairbanks'.”

Photo courtesy of Joan Palmer, Associated with B-CC '63

“Coach Darget was one of the few coaches at that time to have a stat guy to keep some basic stats. He went on to coach at Whitman and I heard he has since died. He was a fine young coach at Western”

Bryant Agnew, B-CC '63



Mike Hawfield (Left) and Tommy Walsh (Right) off to Mike's wedding, 1968

Mike Hawfield, B-CC '63



October 2003, 40th Reunion at Falls Road Golf Course, Potomac, Md



Afterwards in clubhouse: John Berry, Don/Ron Collins, Ron/Don Collins, Dave Wilson, Dale Heiges, Carl Huie. Later, manager kicked group out for being too "boisterous."



Winter 2004: Heiges doing a Craig Stadler, by the rules.



June 2004: Heiges, caddie, Huie: We didn't score (well) that day. Ball kept going into the woods.



Spring 2003, at Tomlin Farm: Huie, Lanny Hunt, Wilson, (Hot Water) Agnew, Berry



May 2004, another excellent golf day.



Hot Shoppes Last Day 1995



Bethesda Theater



Little Tavern
There is still one in Laurel



Kassai Club

Front row: H.Kroll, K. Moran, H.Craig, P. Taylor, B. Blackman, R. Sisler, D. Feldstein, G. Miller

Second row: P. Tolson, S. Nicodemus, S. Morell, J. Cahn - President, K. Phillips, E. Emerson, J. Carson, E. Jacobs

Third row: L. Nadler, D. Gomien, C. Branstrom, S. Wheeler, B. Fraser, L. Pollin, B Young, D. Milton, S. Piper, B. Nordbeck, A. Strickland, C. Pendleton, P. Wigglesworth, M. Burns, P. Reshoft, P. Loomis

Fourth row: J. Carlock, B. Lee, B Edmonds, E. Ullman, C. Truppner, J. Mackie, C. Langer, J. Burke, E. Banachowski, J. Pickard, L. Willoughby



Key Club

Front row: R. Carmichael, M. Beach

Second row: D. Wilson, C. Baum, D. Heiges, B. Dorman, C. Huie - President, R. Smith, W. Lee

Third row: R. Fox, A. Vilches, D. Liverett, B. Ho, W. Dunn, M. Mann, D. Williams, J. Hadler, C. Bruce, T. Fahey

Fourth row: D. Gerrish, R. Scott, H. Gehman, J. Van der Aue, O. Aasland, J. Carter, B. Derry, A. Zatman



Chevy Chase Lake was in use from 1925 to 1972. B-CC started in 1925 I think.



Bethesda store, 1940s

No words necessary



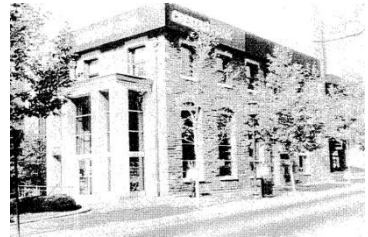
Glen Echo's Crystal Pool Circa 1965



Farm Women's Market



Madonna of the Trail



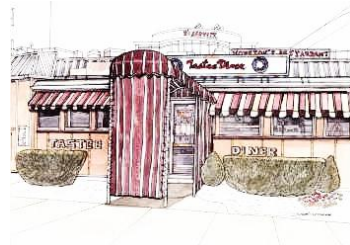
Bank of Bethesda



Community Paint & Hardware



Hiser Theater



Tastee Diner